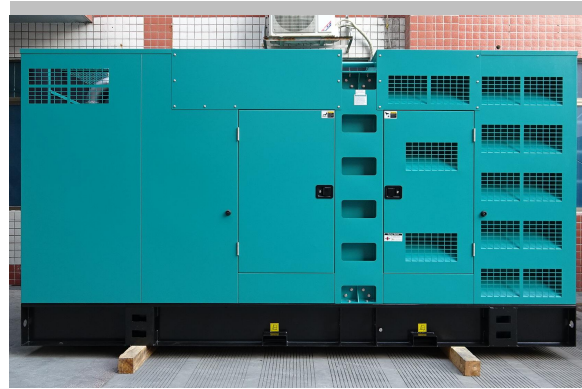
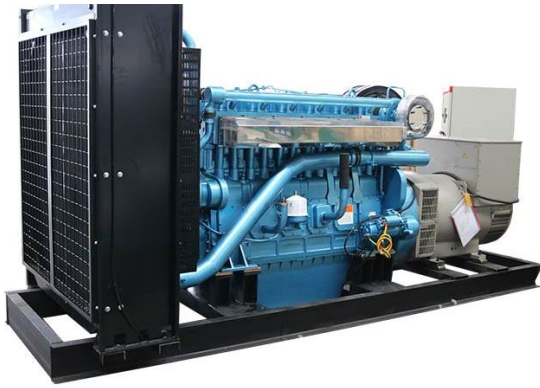




Model:DB-520GF

Powered by Weichai



Applicable Standards

- ISO9001
- ISO14001
- ISO45001
- CE

Factory Inspection

- Complete design and quality inspection
- 0%, 25%, 50%, 75%, 100%, 110% load test
- Function test

520KW 650KVA Diesel Generator Set Datasheet

Genset model	DB-520GF
Prime power	520kW
	650kVA
Standby power	580kW
	725kVA
Rated voltage(V)	400/230 (customizable)
Rate current(A)	936A
Power factor	0.8
Frequency(Hz)	50
Speed(rpm)	1500
Phase:	3 phase 4 wire
Noise level:	105dB at 7m (open type diesel genset)
	75dB at 7m(silent type diesel genset)

Environmental Conditions

- Ambient temperature: +5° C~+40° C
- Altitude: ≤1000m
- Remark: If your conditions are different from the above, please contact our sales.

Type	Dimensions(mm) L*W*H	Weight(kg)	Base bottom fuel tank (Liter)
Open Type	3800*1600*2100	4500	Without
Silent Type	4900*2250*2600	7230	8 hours

- Remark:The dimensions and weight of the above diesel generator set are for reference only, and the specific dimensions and weight of the genset after production completion shall prevail.



Engine Specifications

Manufacturer	Weichai
Model	6M33D633E200
Engine output-prime	575kW
Engine output-standby	633kW
Frequency:	50Hz
Speed:	1500rpm
Cylinders no. & Type:	6 cylinders, L Type, 4 stroke, diesel engine, water-cooled
Aspiration:	Turbocharging and intercooling
Bore*stroke	150*185mm
Displacement	19.6L
Compression Ratio	15:1
Governor	Electronic speed governor
Starter motor voltage:	24V DC
Type Injection System:	direct injection
Oil capacity (Low / High):	36L/61L
Cooling way	Water Radiator & fan
Coolant capacity of the engine:	43.93L
Thermostat opening temperature/full open temperature:	80/92°C
Max. fuel inlet temperature:	70°C
Fuel supply flow-Rated working condition:	116.7kg/h
Fuel supply flow-Overload working condition:	131.5kg/h

- Heavy duty diesel engine
- Starter battery (with lead acid,free-maintenance)
- Anti-vibration mount
- Flexible fuel connection hoses
- Replaceable fuel filter, oil filter & air filter
- Exhaust silencer and bellows
- Cooling radiator and fan
- Operation manuals and circuit diagram documents

Alternator Specifications

Alternator brand optional	Stamford/Leroy Somer/Marathon/ENGGA
Rated Voltage(V)	400/230
Output way	3 phase 4 wire
Rated power factor	0.8
Exciter	Brushless, Self-exciter
Wire connecting method	Y type, 3 phase 4 wire
Max voltage regulation	±1%
Protection class	IP23
Insulation class	H
Temperature rise grade:	H
Rotor:	Single/double bearing
Efficiency:	95%
Regulator:	AVR
Recovery time(Tr)	1s
Waveform : TIF	<50
Waveform : THF	<2%
Type:	Synchronous alternator
Overload	110% rated load for 2 hour per 24 hour



Control System

Model:SmartGen HGM6110(optional Deep Sea)

Origin: China

Automatic controller



Operating Environment	
Operating temperature:	-25℃ ~70℃
Relative humidity:	95%
Operating voltage:	DC24V(range: 8-35V)

Product Features:

HGM6110 series automatic controller, integrating digital, intelligent and network techniques, is used for automatic control and monitoring system of genset. It can carry out functions of automatic start/stop, data measurement, alarm protection and three “remote” (remote control, remote measure and remote communication). The controller uses LCD display, optional display interface including Chinese, English, Spanish, Russian, Portuguese, Turkey, Polish and French with easy and reliable operation.

Below shut down causes are included:

- Low Coolant Level
- Low oil pressure
- High output frequency
- High output voltage
- Emergency stop
- High coolant temperature
- Low output frequency
- Low output voltage
- Low Fuel Level

Other Options

<input type="checkbox"/> Oil heater <input type="checkbox"/> Trailer genset <input type="checkbox"/> Coolant heater <input type="checkbox"/> Starting batteries <input type="checkbox"/> Automatic transfer switch (ATS) <input type="checkbox"/> Spare parts	<input type="checkbox"/> Soundproof canopy genset <input type="checkbox"/> Containerized type genset <input type="checkbox"/> Automatic Parallel cabinet <input type="checkbox"/> Fuel tank-Customizable capacity <input type="checkbox"/> Heat exchanger--Water-cooled tower system
--	--

Guangxi Dingbo Power Equipment Manufacturing Co.,Ltd

Add: No. 10, Kechuang Road, High-tech Zone, Nanning, Guangxi, China

Tel: +86 13481024441

Fax: +86 771 5805 259

Web: www.dbdieselgenerator.com

Email: dingbo@dieselgeneratortech.com