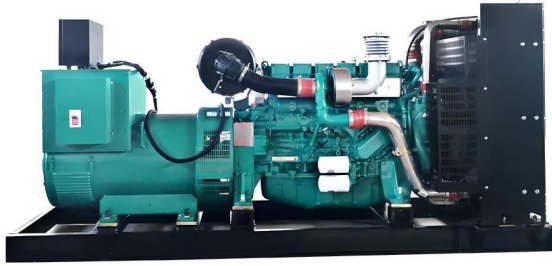




# Model:DB-400GF

Powered by Weichai



### Applicable Standards

- ISO9001
- ISO14001
- ISO45001
- CE

### Factory Inspection

- Complete design and quality inspection
- 0%, 25%, 50%, 75%, 100%, 110% load test
- Function test

### 400KW 500KVA Diesel Generator Set Datasheet

Genset model	DB-400GF
Prime power	400kW
	500kVA
Standby power	440kW
	550kVA
Rated voltage(V)	400/230 (customizable)
Rate current(A)	720A
Power factor	0.8
Frequency(Hz)	50
Speed(rpm)	1500
Phase:	3 phase 4 wire
Noise level:	105dB at 7m ( open type diesel genset)
	75dB at 7m(silent type diesel genset)

### Environmental Conditions

- Ambient temperature: +5° C~+40° C
- Altitude: ≤1000m
- Remark: If your conditions are different from the above, please contact our sales.

Type	Dimensions(mm) L*W*H	Weight(kg)	Base bottom fuel tank (Liter)
Open Type	3700*1360*2000	3800	Without
Silent Type	4700*2100*2450	6050	8 hours

- Remark:The dimensions and weight of the above diesel generator set are for reference only, and the specific dimensions and weight of the genset after production completion shall prevail.



## Engine Specifications

<b>Manufacturer</b>	<b>Weichai</b>
<b>Model</b>	<b>WP13D490E310</b>
Engine output-prime	450kW
Engine output-standby	490kW
Frequency:	50Hz
Speed:	1500rpm
Cylinders no. & Type:	6 cylinders, In line, 4 stroke, diesel engine, water-cooled
Aspiration:	Turbocharged and Intercooled
Bore*stroke	127*165mm
Displacement	12.54L
Compression Ratio	17:1
Governor	Electronic speed governor
Starter motor voltage:	24V DC
Type Injection System:	direct injection
The capacity of oil sump:	36L
Cooling way	Water Radiator & fan
Coolant capacity:	25L
Min. coolant temperature of engine working:	50°C
Fuel consumption at rated working condition:	$\leq 205\text{g/kW} \cdot \text{h} \pm 3\%$
Consume ratio of oil and fuel	$\leq 0.2\%$

- Heavy duty diesel engine
- Starter battery (with lead acid, free-maintenance)
- Anti-vibration mount
- Flexible fuel connection hoses
- Replaceable fuel filter, oil filter & air filter
- Exhaust silencer and bellows
- Cooling radiator and fan
- Operation manuals and circuit diagram documents

## Alternator Specifications

Alternator brand optional	Stamford/Leroy Somer/Marathon/ENGGA
Rated Voltage(V)	400/230
Output way	3 phase 4 wire
Rated power factor	0.8
Exciter	Brushless, Self-exciter
Wire connecting method	Y type, 3 phase 4 wire
Max voltage regulation	$\pm 1\%$
Protection class	IP23
Insulation class	H
Temperature rise grade:	H
Rotor:	Single/double bearing
Efficiency:	95%
Regulator:	AVR
Recovery time(Tr)	1s
Waveform : TIF	<50
Waveform : THF	<2%
Type:	Synchronous alternator
Overload	110% rated load for 2 hour per 24 hour



# Control System

**Model:SmartGen HGM6110(optional Deep Sea)**

**Origin: China**

**Automatic controller**



Operating Environment	
Operating temperature:	-25℃ ~70℃
Relative humidity:	95%
Operating voltage:	DC24V(range: 8-35V)

### Product Features:

HGM6110 series automatic controller, integrating digital, intelligent and network techniques, is used for automatic control and monitoring system of genset. It can carry out functions of automatic start/stop, data measurement, alarm protection and three “remote” (remote control, remote measure and remote communication). The controller uses LCD display, optional display interface including Chinese, English, Spanish, Russian, Portuguese, Turkey, Polish and French with easy and reliable operation.

### Below shut down causes are included:

- Low Coolant Level
- Low oil pressure
- High output frequency
- High output voltage
- Emergency stop
- High coolant temperature
- Low output frequency
- Low output voltage
- Low Fuel Level

### Other Options

<input type="checkbox"/> Oil heater <input type="checkbox"/> Trailer genset <input type="checkbox"/> Coolant heater <input type="checkbox"/> Starting batteries <input type="checkbox"/> Automatic transfer switch (ATS) <input type="checkbox"/> Spare parts	<input type="checkbox"/> Soundproof canopy genset <input type="checkbox"/> Containerized type genset <input type="checkbox"/> Automatic Parallel cabinet <input type="checkbox"/> Fuel tank-Customizable capacity <input type="checkbox"/> Heat exchanger--Water-cooled tower system
--	--

### Guangxi Dingbo Power Equipment Manufacturing Co.,Ltd

Add: No. 10, Kechuang Road, High-tech Zone, Nanning, Guangxi, China

Tel: +86 13481024441

Fax: +86 771 5805 259

Web: [www.dbdieselgenerator.com](http://www.dbdieselgenerator.com)

Email: [dingbo@dieselgeneratortech.com](mailto:dingbo@dieselgeneratortech.com)