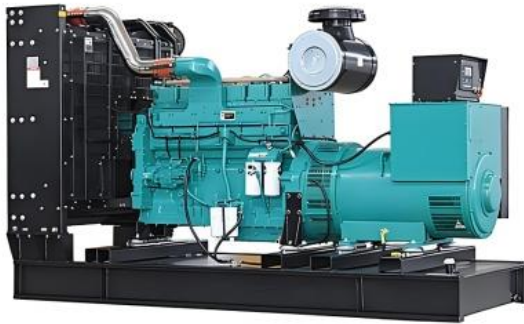




# Model:DB-150GF

Powered by Cummins



### Applicable Standards

- ISO9001
- ISO14001
- ISO45001
- CE

### Factory Inspection

- Complete design and quality inspection
- 0%, 25%, 50%, 75%, 100%, 110% load test
- Function test

150KW 188KVA Diesel Generator Set Specifications	
Genset model	DB-150GF
Prime power	150kW
	188kVA
Standby power	165kW
	206kVA
Rated voltage(V)	400/230 (customizable)
Rate current(A)	270
Power factor	0.8
Frequency(Hz)	50
Speed(rpm)	1500
Phase:	3 phase 4 wire
Noise level:	105dB at 7m ( open type diesel genset)
	75dB at 7m(silent type diesel genset)

### Environmental Conditions

- Ambient temperature: +5° C~+40° C
- Altitude: ≤1000m
- Remark: If your conditions are different from the above, please contact our sales.

Type	Dimensions(mm) L*W*H	Weight(kg)	Base bottom fuel tank (Liter)
Open Type	2450*850*1800	1450	Without
Silent Type	3000*1240*1790	1700	8 hours

- Remark:The dimensions and weight of the above diesel generator set are for reference only, and the specific dimensions and weight of the genset after production completion shall prevail.



## Engine Specifications

<b>Manufacturer</b>	<b>Dongfeng Cummins Engine Co.,Ltd</b>
<b>Model</b>	<b>6CTA8.3-G1</b>
Engine output-prime	163kW
Engine output-standby	180kW
Frequency:	50Hz
Speed:	1500rpm
Cylinders no. & Type:	6 cylinders, Inline, 4 stroke, diesel engine, water-cooled
Aspiration:	Turbocharged & Aftercooled
Bore*stroke	114*135mm
Displacement	8.3L
Compression Ratio	17.3:1
Governor	Electronic speed governor
Starter motor voltage:	24V DC
Type Injection System:	direct injection
Maximum Oil Temperature	121 °C
Minimum Required Lube System Capacity - Sump plus Filters	27.6L
Cooling way	Water Radiator & fan
Coolant Capacity - Engine Only	12.3L
Standard Thermostat	82-95°C
Fuel consumption-standby power (100%)	48L/h
Fuel consumption-prime power (100%)	42L/h
Fuel consumption-prime power (75%)	31L/h
Fuel consumption-prime power (50%)	21L/h
Fuel consumption-prime power (25%)	13L/h

- Heavy duty diesel engine
- Anti-vibration mount
- Replaceable fuel filter, oil filter & air filter
- Cooling radiator and fan
- Starter battery (with lead acid, free-maintenance)
- Flexible fuel connection hoses
- Exhaust silencer and bellows
- Operation manuals and circuit diagram documents

## Alternator Specifications

Alternator brand optional	Stamford/Leroy Somer/Marathon/ENGGA
Rated Voltage(V)	400/230
Output way	3 phase 4 wire
Rated power factor	0.8
Exciter	Brushless, Self-exciter
Wire connecting method	Y type, 3 phase 4 wire
Max voltage regulation	±1%
Protection class	IP23
Insulation class	H
Rotor:	Single/double bearing
Efficiency:	95%
Regulator:	AVR
Recovery time(Tr)	1s
Waveform : TIF	<50
Waveform : THF	<2%
Overload	110% rated load for 2 hour per 24 hour



# Control System

**Model:SmartGen HGM6110(optional Deep Sea)**

**Origin: China**

**Automatic controller**



Operating Environment	
Operating temperature:	-25℃ ~ 70℃
Relative humidity:	95%
Operating voltage:	DC24V(range: 8-35V)

### Product Features:

HGM6110 series automatic controller, integrating digital, intelligent and network techniques, is used for automatic control and monitoring system of genset. It can carry out functions of automatic start/stop, data measurement, alarm protection and three “remote” (remote control, remote measure and remote communication). The controller uses LCD display, optional display interface including Chinese, English, Spanish, Russian, Portuguese, Turkey, Polish and French with easy and reliable operation.

### Below shut down causes are included:

- Low Coolant Level
- Low oil pressure
- High output frequency
- High output voltage
- Emergency stop
- High coolant temperature
- Low output frequency
- Low output voltage
- Low Fuel Level

### Other Options

<input type="checkbox"/> Oil heater	<input type="checkbox"/> Soundproof canopy genset
<input type="checkbox"/> Trailer genset	<input type="checkbox"/> Containerized type genset
<input type="checkbox"/> Coolant heater	<input type="checkbox"/> Automatic Parallel cabinet
<input type="checkbox"/> Starting batteries	<input type="checkbox"/> Fuel tank-Customizable capacity
<input type="checkbox"/> Automatic transfer switch (ATS)	<input type="checkbox"/> Heat exchanger--Water-cooled tower system
<input type="checkbox"/> Spare parts	

### Guangxi Dingbo Power Equipment Manufacturing Co.,Ltd

Add: No. 10, Kechuang Road, High-tech Zone, Nanning, Guangxi, China

Tel: +86 13481024441

Fax: +86 771 5805 259

Web: www.dbdieselgenerator.com

Email: dingbo@dieselgeneratortech.com